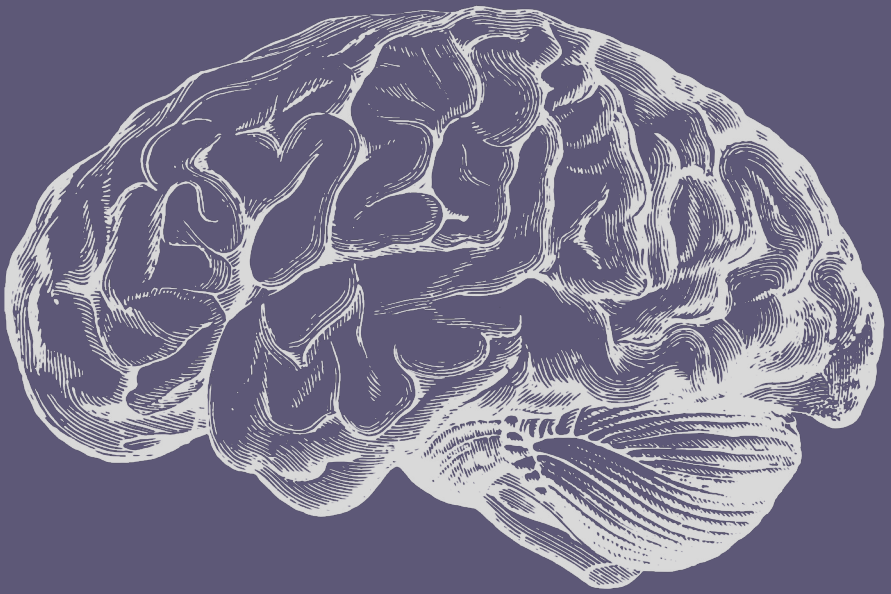


Mild Traumatic Brain Injury in Justice-Impacted Individuals and Executive Function Consequences on Transition and Reintegration into the Community



Alaina Randerson OTD, OTR/L, MS, CBIS

Occupational Therapist-Oregon State Hospital

Prisoner Representative-Oregon Health

Authority Institutional Review Board

Background



- The United States has the highest incarceration rate among founding NATO countries
- 614 people are incarcerated for every 100,000 (totaling >5.8 million)
(Prison Policy Initiative, n.d.)



- 1.7 million people sustain a TBI in the United States per year
- 75-90% of TBIs are classified as mild traumatic brain injuries (mTBI)
(Moore et al., 2016; Smith et al., 2021)

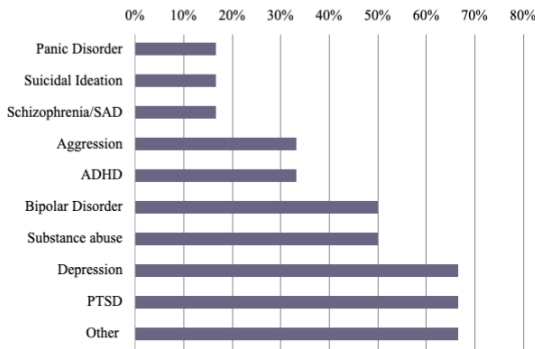
Preliminary evidence demonstrates the rate of mTBI in justice-impacted individuals is **50 times higher** than the general population

(Siegler et al., 2017)

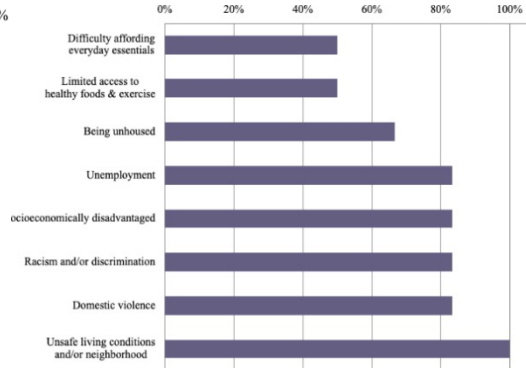
Study Design & Results



Comorbidity Conditions Experienced



Social Determinants of Health Experienced



Rivermead Post-Concussional Symptom Questionnaire

- 83.3% study participants experienced mTBI symptoms associated with early post-concussion symptoms along with chronic mTBI symptoms that impact their occupational participation, psychosocial functioning, and lifestyle

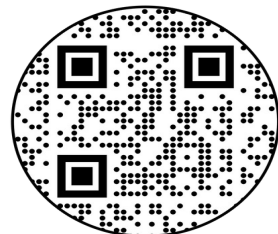
Executive Skills Profile

- Response Inhibition,
 - Emotional Control, and
 - Mental Flexibility
- were the executive function skills with greatest room for improvement for participants

Ohio State University Traumatic Brain Injury Identifier

- 83.3% study participants experienced mTBI symptoms associated with early post-concussion symptoms along with chronic mTBI symptoms that impact their occupational participation, psychosocial functioning, and lifestyle

Semi-Structured Interview Themes & Quotes



Implications & Conclusions



Justice-impacted individuals experience several compounding disparities, including:

- Socioeconomic status,
- Mental health comorbidities, and
- Social determinants of health

that are further exacerbated by persistent post-concussional symptoms and executive dysfunctions.

These disparities can be alleviated by:

- Proper screening, treatment, and accommodations in the community and along the criminal justice continuum
- Inclusion of occupational therapy services to promote successful transition and reintegration into the community

Ultimately, it is in the best interest of all parties involved to create a justice system that is responsive and inclusive to mTBI.

References and Contact Information

