

Survey of the status of regional collaboration among rehabilitation professionals at the time of discharge for people with high medical dependency

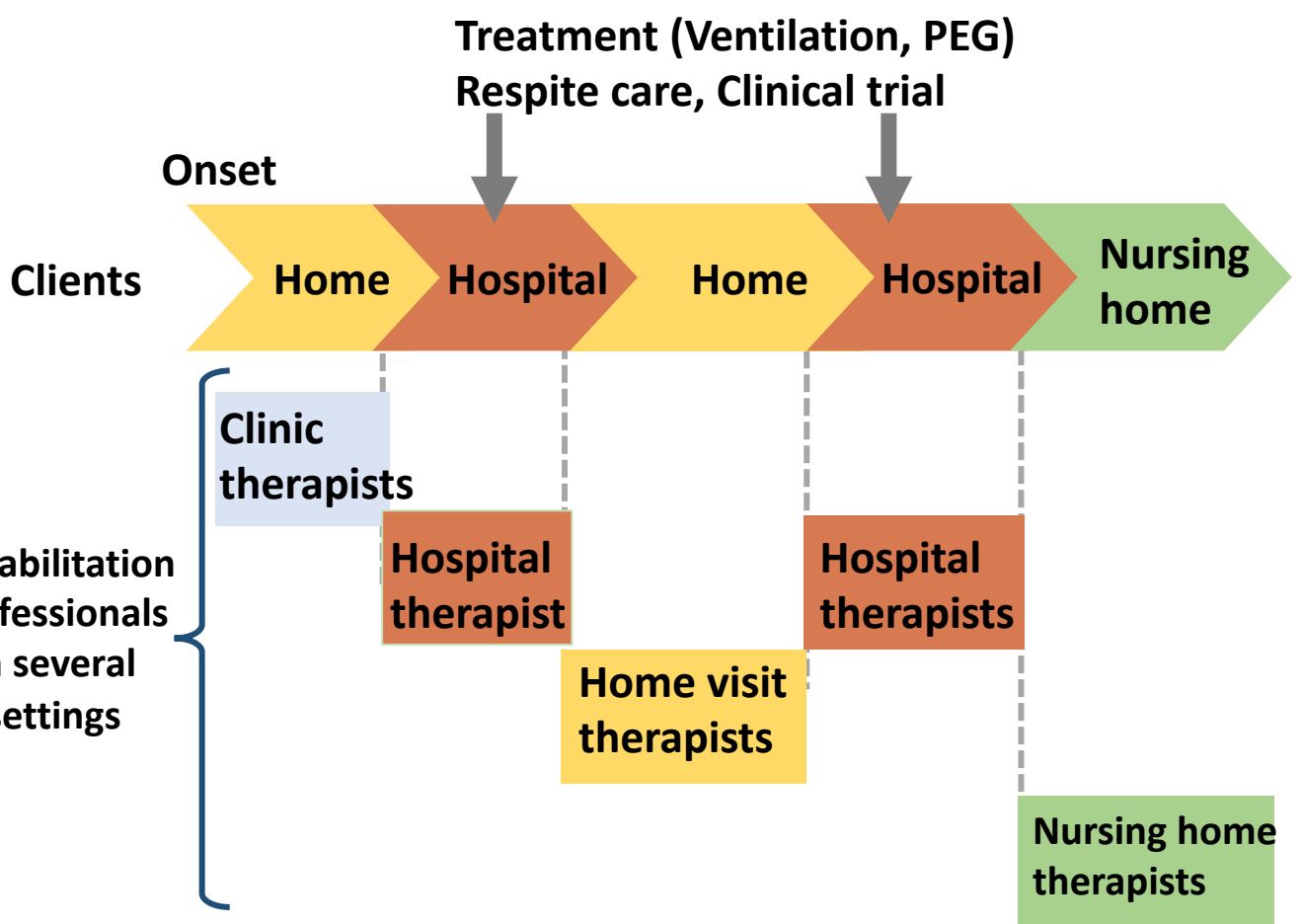
Ayumi Otera¹⁾, Takashi Asakawa¹⁾, Aya Ogino¹⁾, Naomi Tominaga¹⁾

1) International University of Health and Welfare Ichikawa Hospital, Chiba, JAPAN

Conflict of Interest : None

Introduction

Early -stage Mid-stage Advanced-stage



- Avoid fragmented intervention by each therapists
- Provide more continuous support and coordinated system



Explore more effective methods of inter-facility collaboration

Study aim

Understand status of collaboration among rehabilitation professionals to support patient transitions

Methods

Study design

- Retrospective cross-sectional study (24-CI-011)
- Analysis of rehabilitation records from single facility

Number of subjects

- 69 clients
 - 46 with Amyotrophic Lateral Sclerosis (ALS)
 - 23 with Multiple System Atrophy (MSA)

Time Period

- April 2020 to January 2025

Data

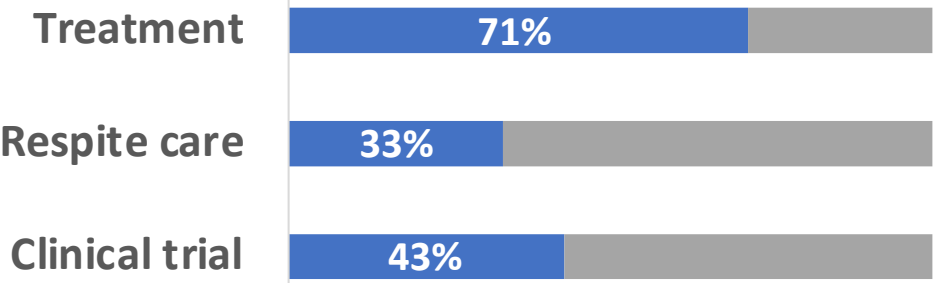
- Demographics
- Hospitalization purpose (Treatment, Respite care, Clinical Trial)
- Approaches to community

	Overall n = 69	Treatment n = 35	Respite care n = 27	Clinical Trial n = 7
Age	63.3 ± 10.8	63.1 ± 10.0	62.7 ± 12.5	66.5 ± 7.3
Sex (M/F)	41/28	22/13	15/12	4/3
Severity of ADL※1	4.5 ± 0.7	4.3 ± 0.8	4.8 ± 0.5	4.4 ± 0.7
Mechanical Ventilation	39 (56%)	19 (54%)	18 (67%)	2 (29%)
PEG	46 (67%)	22 (63%)	20 (74%)	4 (58%)
Suction	27 (39%)	13 (37%)	13 (48%)	1 (14%)

※1 modified Ranking Scale (1:No symptom ~ 5:Severe disability)

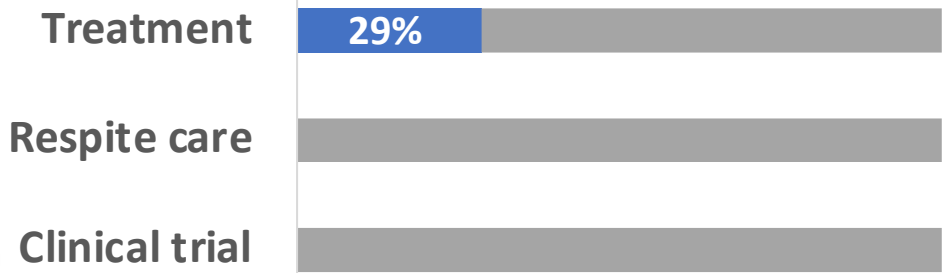
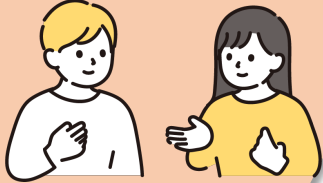
Results

Rehabilitation summary



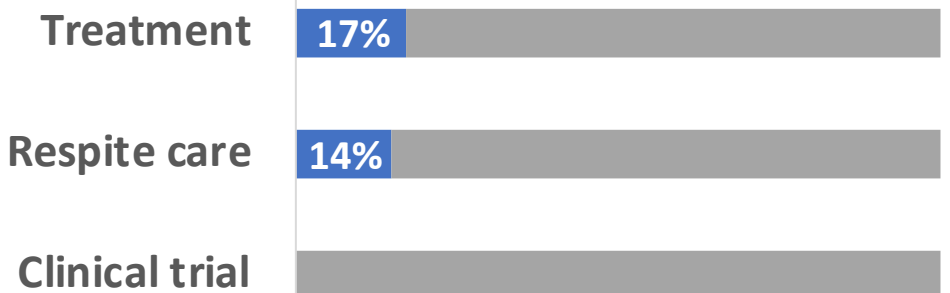
In some cases(n=12), visual materials (photos and videos) in the rehabilitation summary

Multidisciplinary team conference



- Average number of participants : 9.3
- Average conference duration : 110 minutes
- Conference modality : In-person (7), Online(2), Hybrid(1)

Assistive devices rental



- Assistive devices provided on loan :
Communication aids (AAC devices)
Home alert system, Adaptive switch

Implications

1. Visual materials are useful for complex care needs
2. Multidisciplinary conference and careful discharge planning are essential
3. Utilization of specialized communication devices is enabled by hospital support