

Joint Innovation Partnership for Learning (JIP4L): *attaining inclusive education in the Netherlands*

Prof. Dr. Barbara Piskur; ZUYD
University (Netherlands) & Hasselt
University (Belgium)

Co-authors: Sarah Meuser – Hoselmann
(ZUYD), Eefje Kern (ZUYD), Lars
Goertzen (MOVARE), Ramon Daniels
(ZUYD)

The authors declare no potential conflicts of interest; project was financially supported by NordForsk and ERASMUS+ grants.

Background: In Europe, 25% of children aged 0 – 18 face poverty or social exclusion, highlighting the limitations of individual approaches in addressing this complex challenge.



Objective: International uptake of the Partnering for Change Model outside Canadian context.

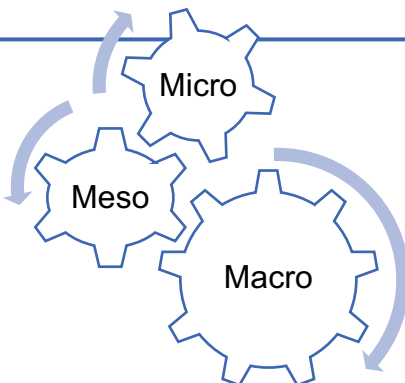


Methods: Mixed methods using Barrera & Castro's (2006) framework within a Dutch–Swedish context.

- NL: 18 schools, 48 teachers, 16 OTs, 18 principles and 782 children participated (2018-2024).



Results: Joint Innovation Partnership for Learning (JIP4L) is a Partnership Continuum Model across micro-meso-macro levels.



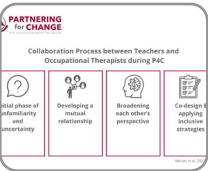
JIP4L



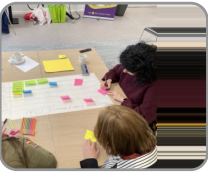
BUILDING CONDITIONS - Context & Stakeholders.



JOINT LEARNING IN INNOVATION AND CO-CREATION - Basic partnership with local JP4L community: Introducing P4C principles



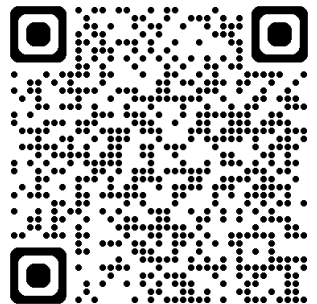
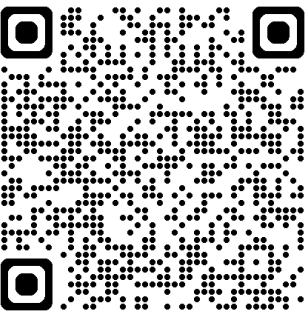
JOINT LEARNING IN INNOVATION AND CO-CREATION - Collaborative partnership: Participatory Design-led Innovation



JOINT LEARNING IN INNOVATION AND CO-CREATION - Continuous partnership: Implementation of Inclusive Education Strategies



CONTEX TRANSFORMATION - Coherent partnership



[The Joint Innovation Partnership for Learning \(JIP4L\)](#)

[\(2\) Barbara Piškur | LinkedIn](#)