

# Exploring everyday life, health, and the role of places among communities living in socioeconomically disadvantaged areas in the North of Sweden: an ethnographic study

Caroline Bigey<sup>1</sup> and Margarita Mondaca<sup>2</sup>

<sup>1</sup>Doctoral student | <sup>2</sup>Assistant professor

Umeå University, Department of Community Medicine and Rehabilitation, Occupational Therapy

WFOT congress 2026

Supported by a grant from

**FORTE**

Swedish Research Council for  
Health, Working Life and Welfare





© Leonardo.ai, AI-generated image, 2026

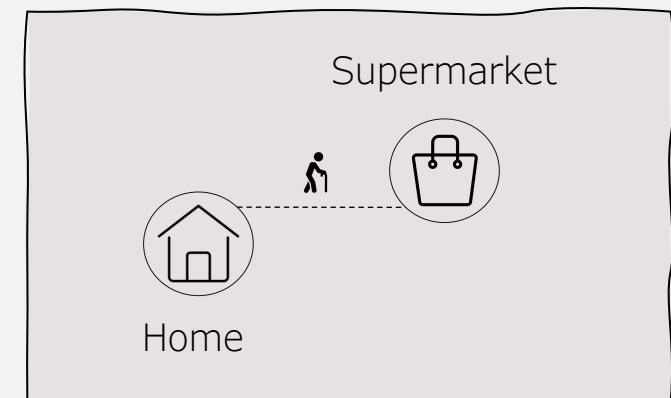
# Soraya

## The hidden barriers to health

Arriving in Sweden

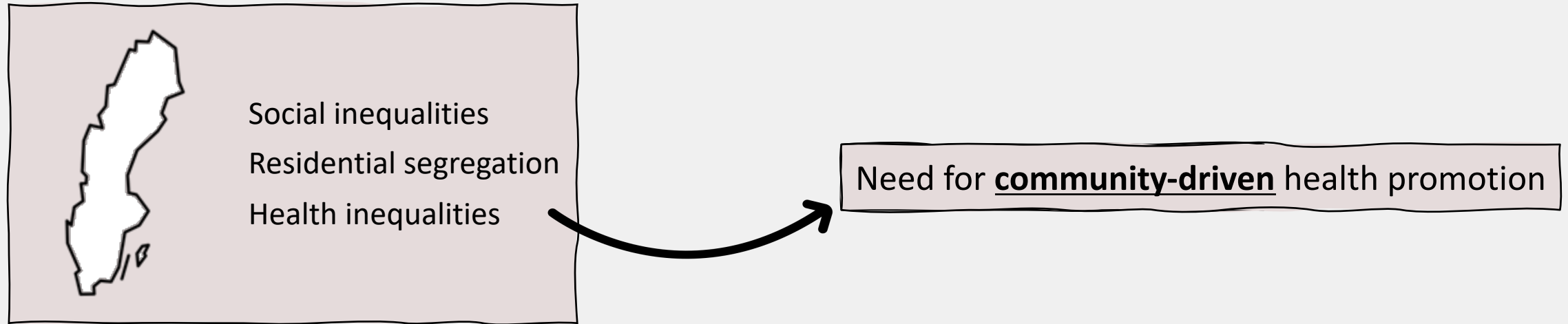
Learning Swedish

Impact on everyday life

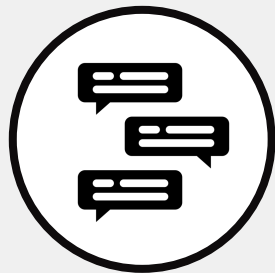


© Leonardo.ai, AI-generated image, 2026

# Towards Health Equality



Co-creating health promotion interventions in disadvantaged areas



Community voices on health and places

# Towards Health Equality



Community voices on health and places  
Ethnographic study

250 hours ethnography  
20 participant observations  
8 in-depth interviews  
10 workshops  
40 meetings with local actors

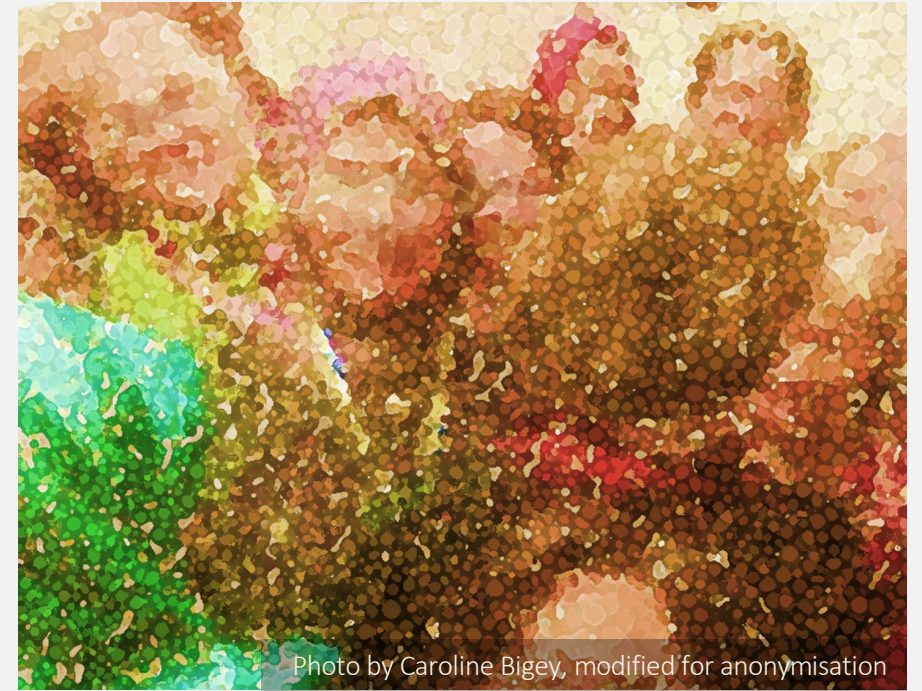
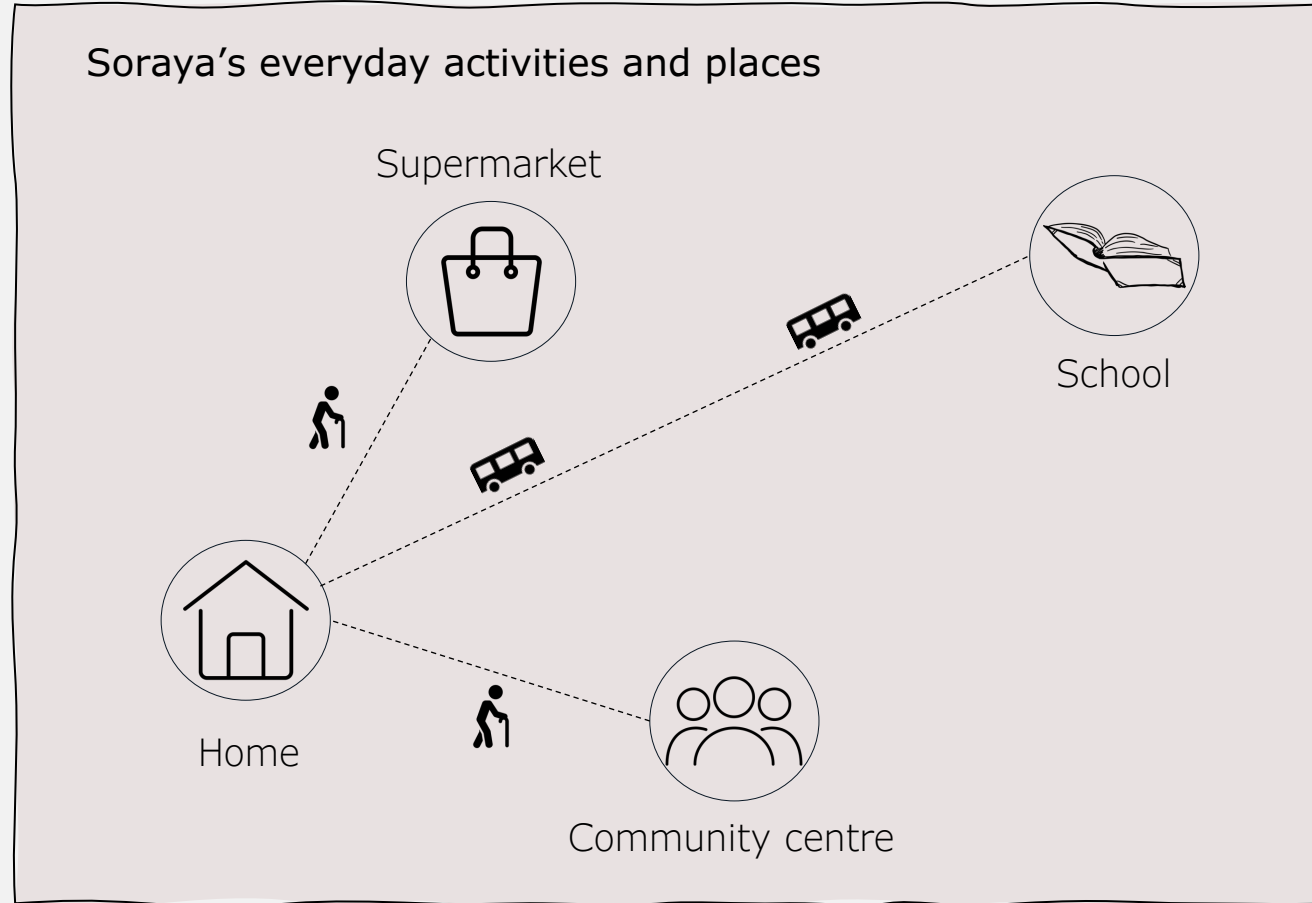
*The Lancet Regional Health – Europe, 2023; Backvall, 2019; Boverket, 2023; Lundberg, 2018; SOU, 2017; WHO, 2025; Bloch et al., 2014; Ramji et al., 2023*

*Ahmed-Landeryou, 2024, Hammersley & Atkinson, 2007 Polkinghorne, 1995*



# Soraya

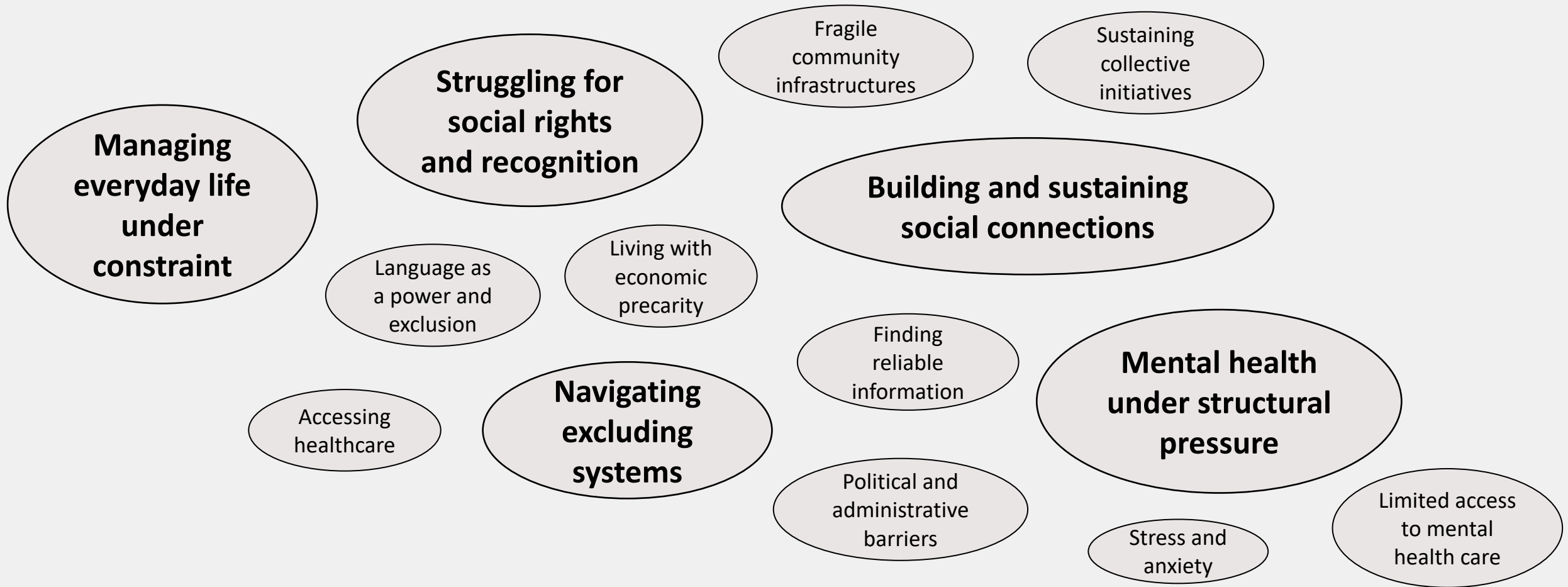
## From isolation to connection



- Social connection
- Organisational guidance
- Participation in society
- **Health and well-being**

# Preliminary insights from ethnography

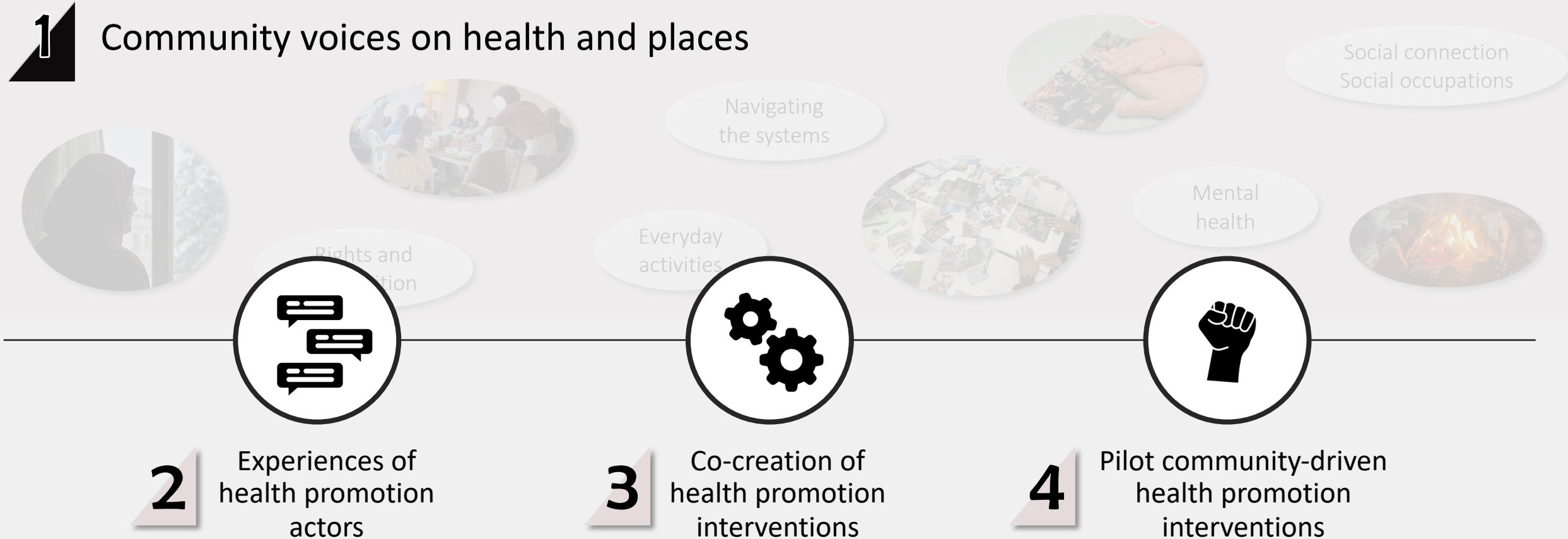
Health as structural conditions, not individual lifestyles



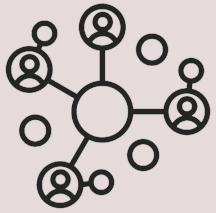
# What's next?

## Towards health equity

### 1 Community voices on health and places



# Implications for Occupational Therapy



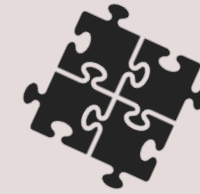
## PRACTICE

- Reframing health promotion
- System navigation
- Community settings



## EDUCATION

- Structural competency
- Critical reflexivity and positionality
- Plurality of knowledges



## RESEARCH

- Engaged scholarship
- Methodologies - complexity
- Narrative, ethnography, participatory
- Decoloniality, critical

Health equity grows when we listen, co-create,  
and act together with communities

# References

- Ahmed-Landeryou, M. J. (2024). A critical reflection from inside, looking back and forward: Theorising perspectives on decolonising occupational science theory and practice. *Journal of Occupational Science*, 31(1), 32-46. <https://doi.org/10.1080/14427591.2023.2246986>
- Backvall, K. (2019). *Constructing the Suburb. Swedish discourses of Spatial Stigmatisation* [Uppsala Universitet]. Uppsala.
- Bloch, P., Toft, U., Reinbach, H. C., Tolnov Clausen, L., Egberg Mikkelsen, B., Poulsen, K., & Bruun Jensen, B. (2014). Revitalizing the setting approach – supersettings for sustainable impact in community health promotion. *International Journal of Behavioural Nutrition and Physical Activity*, 11(118). <http://www.ijbnpa.org/content/11/1/118>
- Boverket. (2023). *Boendesegregationens utveckling och mekanismer. Årsrapport 2023 om den socioekonomiska boendesegregationens utveckling i Sverige*.
- Hammersley, M., & Atkinson, P. (2007). *Ethnography: principles in practice. Third edition* (3rd ed. ed.). Routledge.
- Lundberg, O. (2018). The next step towards more equity in health in Sweden: how can we close the gap in a generation? *Scandinavian Journal of Public Health*, 48, 19-27. <https://doi.org/10.1177/1403494818765702>
- Polkinghorne, D. E. (1995). Narrative configuration in qualitative analysis. *International Journal of Qualitative Studies in Education*, 8(1), 5-23. <https://doi.org/10.1080/0951839950080103>
- Ramji, R., Rämngård, M., Carlson, E., Shleev, S., Awad, E., Cirovic, S., & Kottorp, A. (2023). Health and quality of life among women after participation in a CBPR-informed physical activity intervention: with a pandemic perspective. *Scientific Reports*, 13. <https://doi.org/10.1038/s41598-023-45239-4>
- SOU. (2017). *Nästa steg på vägen mot en mer jämlik hälsa. Förslag för ett långsiktigt arbete för en god och jämlik hälsa*. Stockholm
- The Lancet Regional Health - Europe. (2023). Sweden's economic inequality gap is widening and worrying. *The Lancet*, 26. <https://doi.org/10.1016/j.lanepe.2023.100610>
- World Health Organization. (2025). *World report on social determinants of health equity*.