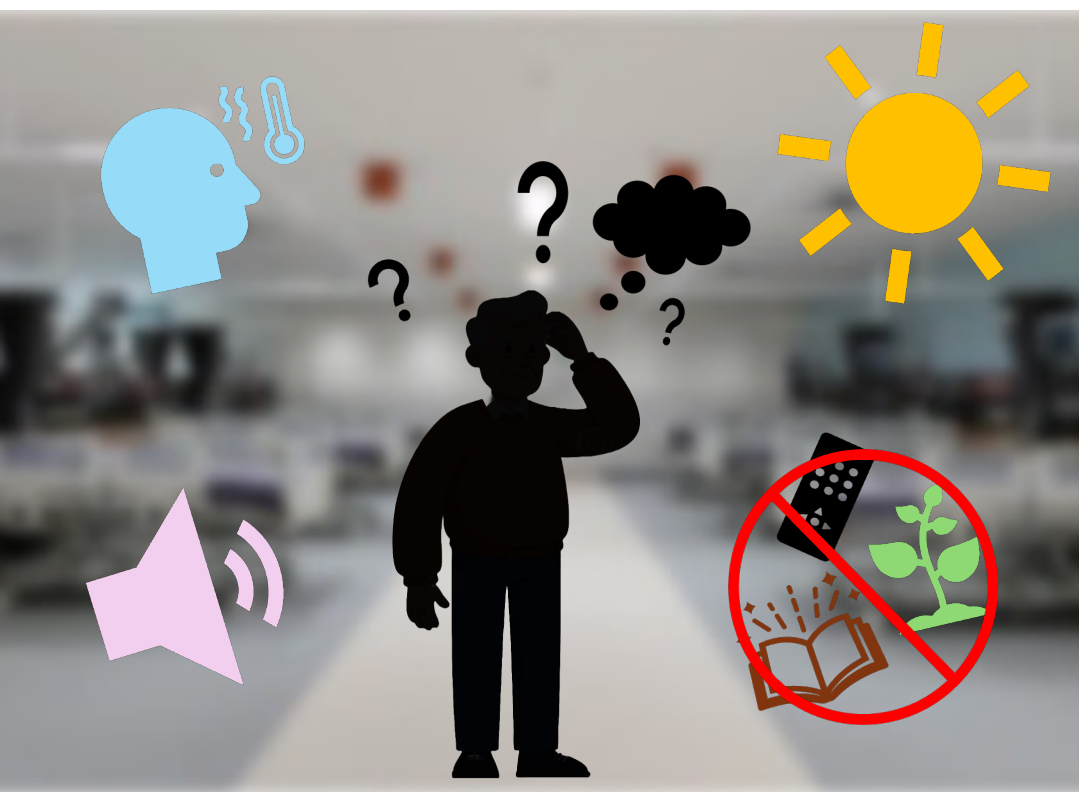




# Sensory Interventions and Dementia



**Presented by Grace Lennon (BOT/Hons I)**

2024 Honours Research Project

**Supervised by Dr Caroline Mills<sup>1</sup>, Dr Nikki Tulliani<sup>1</sup>, Ms Carmen Amato<sup>2</sup>**  
Western Sydney University<sup>1</sup> and South Western Sydney Local Health District<sup>2</sup>

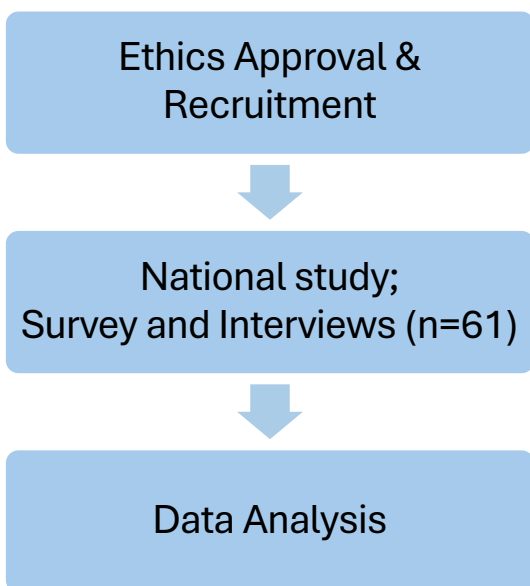
No financial disclosure.



South Western Sydney  
Local Health District



# Insight from Health professionals



## What was revealed?

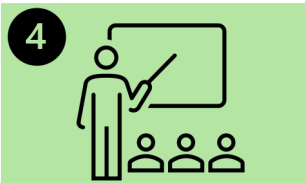
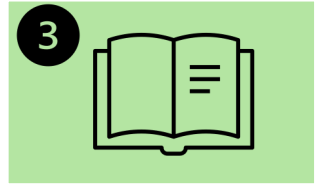
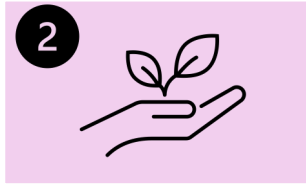
- **Nursing, OT and DT/Rec therapist** most common professions.
- Mostly **female** and from **NSW**.
- Both **person and environment factors** influenced sensory interventions.





# Turning Good Ideas Into Everyday Care:

## 6 Key Insights



**The experience of being human is embedded in the sensory events of our daily lives.**

*- Dr Winnie Dunn*



Contact us:



Reference list:



South Western Sydney  
Local Health District

