

Not left behind.

Considering transport technology and people living with dementia

A priority-setting consensus process with a range of stakeholders

Research team

Jacki Liddle, Peter Worthy, Dennis Frost, Eileen Taylor, Dubhglas Taylor, Cynthia Forlini, Nancy A. Pachana

School of Electrical Engineering and Computer Science; School of Health and Rehabilitation Sciences, School of Psychology, University of Queensland; Deakin University.

Background



People living with dementia experience challenges to their community mobility, often requiring support, and reducing their community engagement.

There is hope that technology-based changes to transport will create more flexible and responsive options.



However, these are currently not being developed considering people living with dementia, and risk further excluding them.



Fig 1: Initial considerations and actions

Aims and approach



To determine the considerations, future visions and priority areas in considering **future transport technology** with people living with dementia.



A **participatory approach** to bringing stakeholders together to explore issues and agree on priorities was developed.

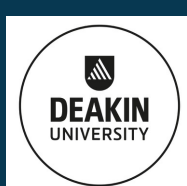
Takeaway messages

- Direct engagement with people with living experience and other stakeholders was possible and beneficial
- Discussing concerns and needs prior to technology-based disruptions is important to reduce risks of digital and community exclusion.
- The top priority was to start collaborative work on transport technologies for people living with dementia now.



A/Prof Jacki Liddle

✉ j.liddle@uq.edu.au



Inclusive methods: A participatory online approach to developing insights and consensus

A participatory approach to developing and adapting the research



- Bringing together a team with different expertise (Living experience, occupational therapy, technology, psychology, ethics).
- Finding inclusive online ways to participate (how to talk community mobility in a lockdown, how to talk about technology that doesn't exist yet).
- Flexible, safe and responsive ways to communicate and participate
- Drew on World Café and Ding methodologies with participatory focus.

Participants

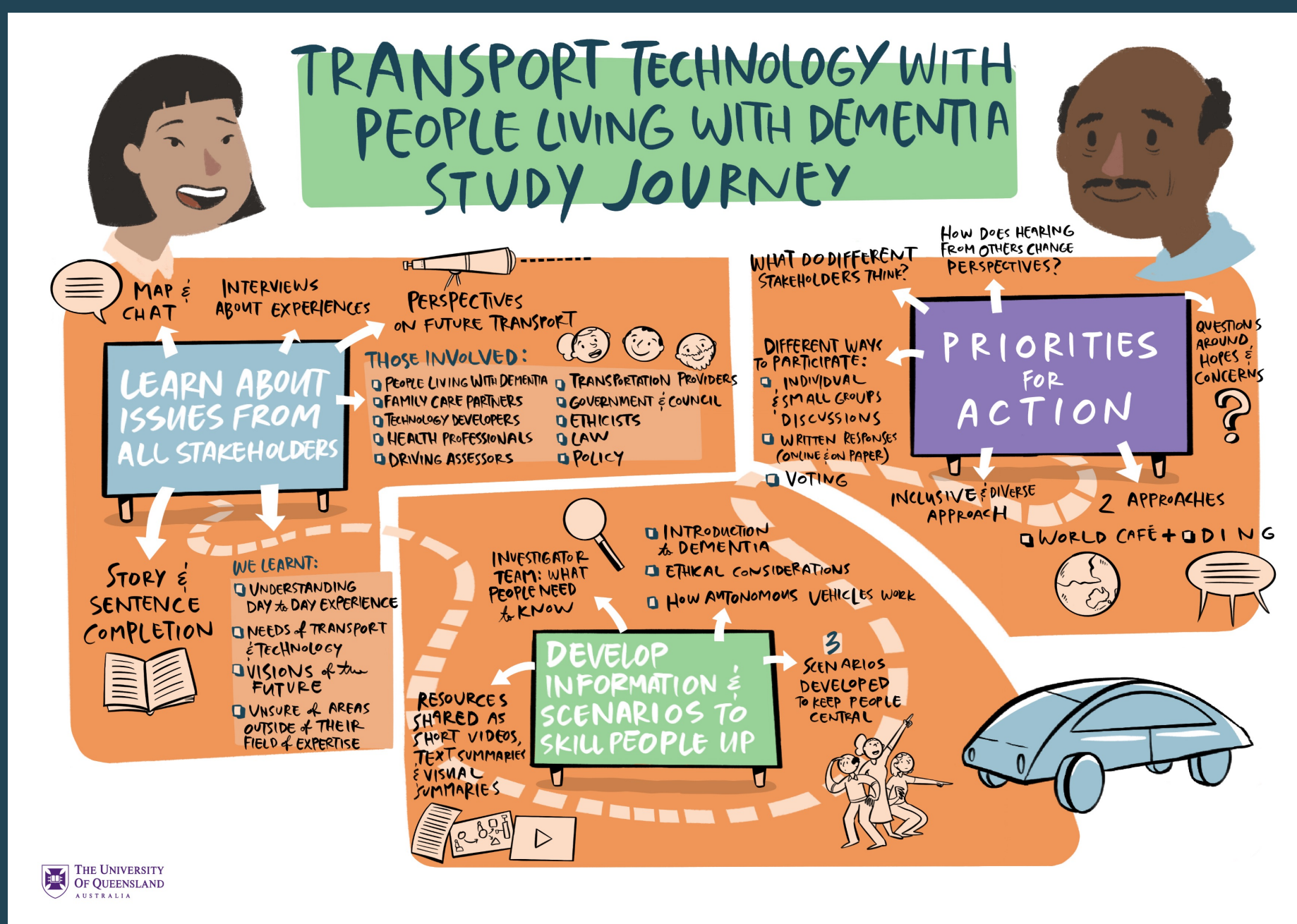


- Approximately 40 different people across 3 stages (31 voted in final consensus)
- People living with dementia, caregivers, health professionals, technology developers, lawyers, ethicists, government, service providers, disability services.

Process



Three Stages to build understanding, insights and agreement
1. Explore; 2. Skill people up; 3. Set priorities



Key methodological approaches and recommendations

- Built on collaborative community engagement approaches (eg World Café, Ding)
- Adapted for inclusion of vulnerable population involving living experience experts
- A range of ways to participate enabled diversity of engagement.

Inclusive online approaches

- Choice of ways to participate
- **Not** just interviews:
 - Map and chat (using google maps on paper or shared screens)
 - Sentence completion (to tap into beliefs and ideas that might be difficult to articulate)
 - Story completion (to explore future ideas and solutions for others)
- Group participation was a choice
 - Could be **just lived experience groups** to ensure people felt heard and safe.



A/Prof Jacki Liddle

✉ j.liddle@uq.edu.au



