

UNIVERSITY OF THE
WITWATERSRAND,
JOHANNESBURG



THERAPEUTIC
Sciences

People-centred Occupational Therapy in South Africa: A framework for integrated rehabilitation in primary healthcare

Dr Lebogang Maseko

Lebogang.maseko@wits.ac.za

WFOT 2026 | Thailand

Why integration matters

- Rehabilitation is essential for Universal Health Coverage
- Global shift towards integrated, people-centred care
- In South Africa:
 - Fragmented services
 - Underfunded and inconsistently implemented
 - OT poorly embedded in PHC systems

Study aim

- Apply a PHC Rehabilitation Integration Framework to OT services in PHC to:
 - Address systemic barriers
 - Develop contextually relevant, actionable strategies

How the framework was developed

- Multi-phase study with data triangulation
 - Scoping review
 - Service provider interviews
 - Patient record analysis
 - Service-user perspectives



Mapped to WHO frameworks

Five strategies for integrating OT into PHC



Strengthening
governance and
accountability



Coordinating
services within
and across
sectors



Reorienting the
model of care



Creating an
enabling
environment

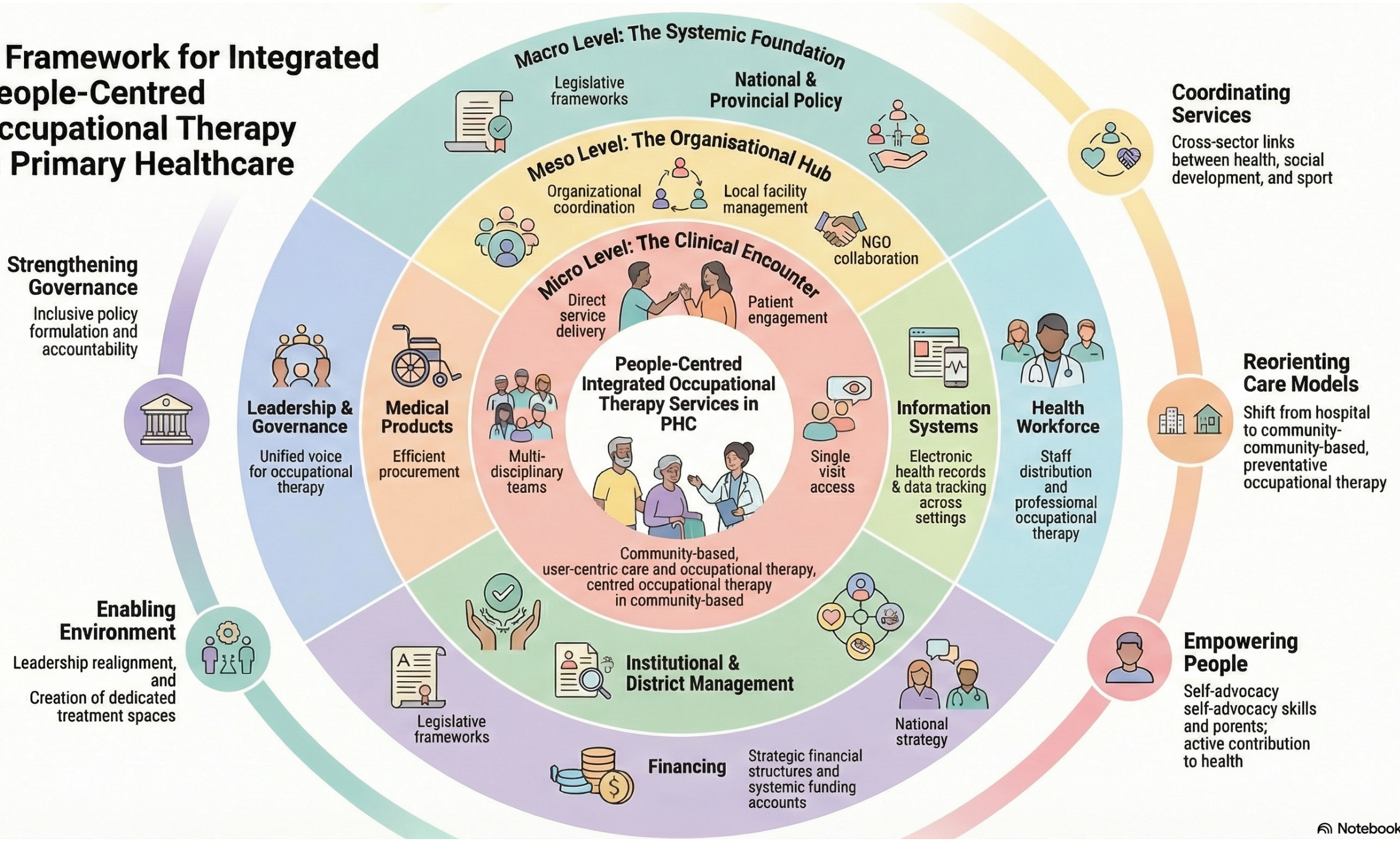


Engaging and
empowering
communities

What integration looks like in practice

- Embed OT in PHC planning and reporting
- Strengthen referral pathways
- Expand community-based rehabilitation
- Address workforce and infrastructure gaps
- Critical role of CHWs

A Framework for Integrated People-Centred Occupational Therapy in Primary Healthcare



Why this matters

- Integration requires systems alignment
- Governance, coordination and workforce capacity are critical
- People-centred care strengthens PHC and advances UHC
- OT must be positioned as core, not optional

References



UNIVERSITY OF THE
WITWATERSRAND,
JOHANNESBURG



THERAPEUTIC
Sciences

Thank You

Lebogang.maseko@wits.ac.za

www.wits.ac.za/therapeuticssciences