

WFOT
Congress 2026



War Trauma, Sensory Processing, and Participation Among Syrian Refugee Women

Asst. Prof. Sümeyye Belhan Çelik, PhD

Assoc. Prof. Esmâ Özkan, PhD

University of Health Sciences, Türkiye

The Department of Occupational Therapy

*This presentation was supported by the TÜBİTAK
2224-A International Scientific Event Participation
Support Program.*



Refugee Women's Needs: A Global & Türkiye Overview



- ◆ Over **117 million** people worldwide forcibly displaced due to persecution, **armed conflict, violence, or human rights violations** as of June 2025

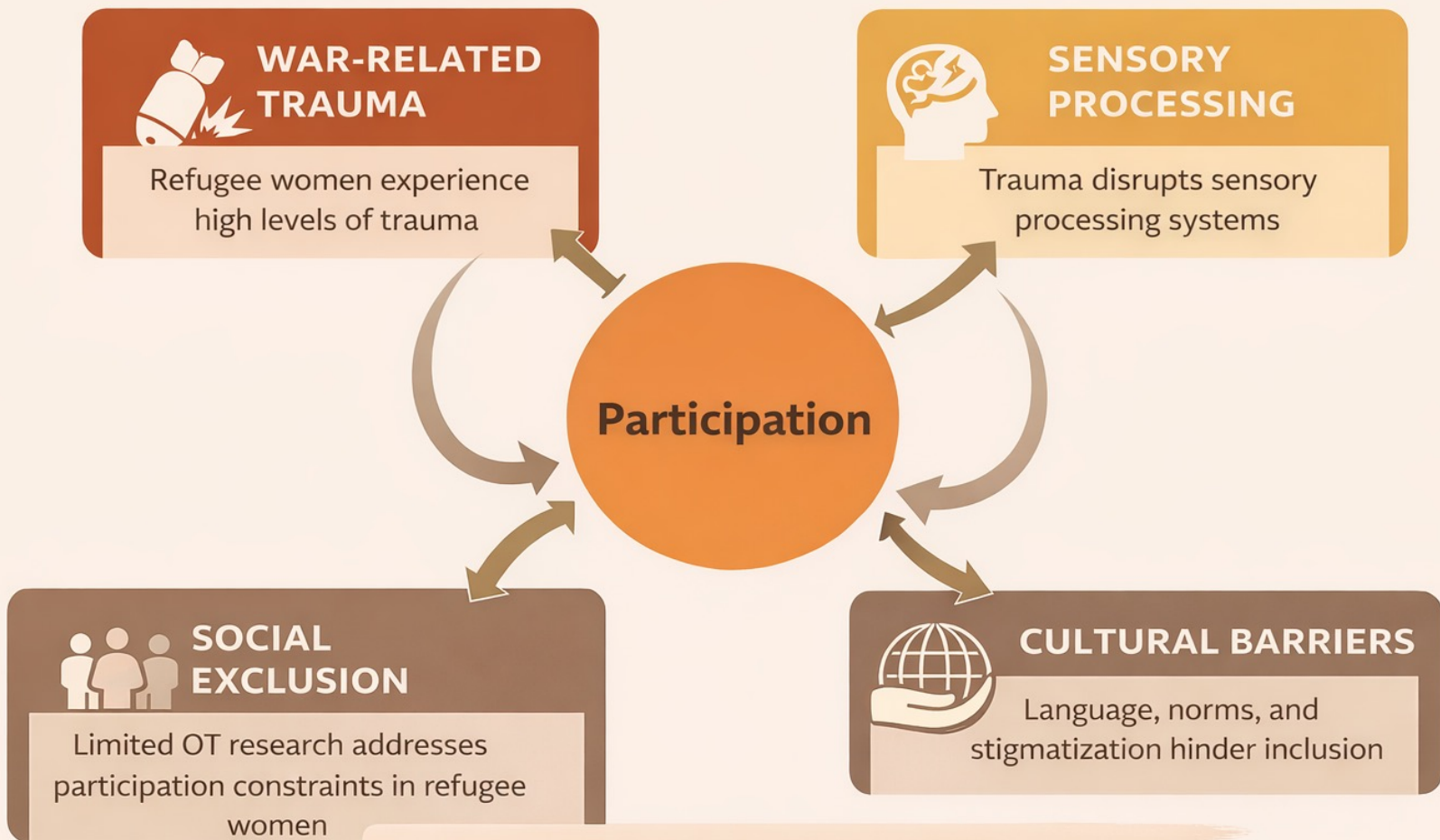


- ◆ Nearly **half** (approx. **48–49%**) **are women** facing serious participation barriers and **occupational injustice**



- ◆ **Türkiye** hosts **~3.1 million Syrians refugees**, the largest Syrian refugee population worldwide

As of the end of June 2025, **more than 117 million people worldwide** have been **forcibly displaced** due to persecution, conflict, violence, or human rights violations.



OCCUPATIONAL JUSTICE

Study Objective

To examine predictive effects of:

War trauma exposure

Sensory processing

on participation constraints among
Syrian refugee women

Methods

Participants:

- 54 Syrian refugee women living in Türkiye

- Mean age: 41.17 ± 10.73

Measures:

War Trauma Exposure Scale (WTES)

Adolescent/Adult Sensory Profile (AASP)

Participation Scale (P-Scale)

Data Analysis

Spearman
correlation
analysis

Multivariable
linear regression
(enter method)

Outcome:
Participation
constraints

Predictors: Trauma
exposure, Sensory
processing

Results – Descriptive Statistics

- WTES: 65.19 ± 23.15

- AASP: 119.17 ± 46.39

- P-Scale: 47.15 ± 21.82

Results – Correlations

Trauma \leftrightarrow Sensory processing ($r = 0.758, p < 0.001$)

Trauma \leftrightarrow Participation ($r = 0.685, p < 0.001$)

Sensory processing \leftrightarrow Participation ($r = 0.700, p < 0.001$)

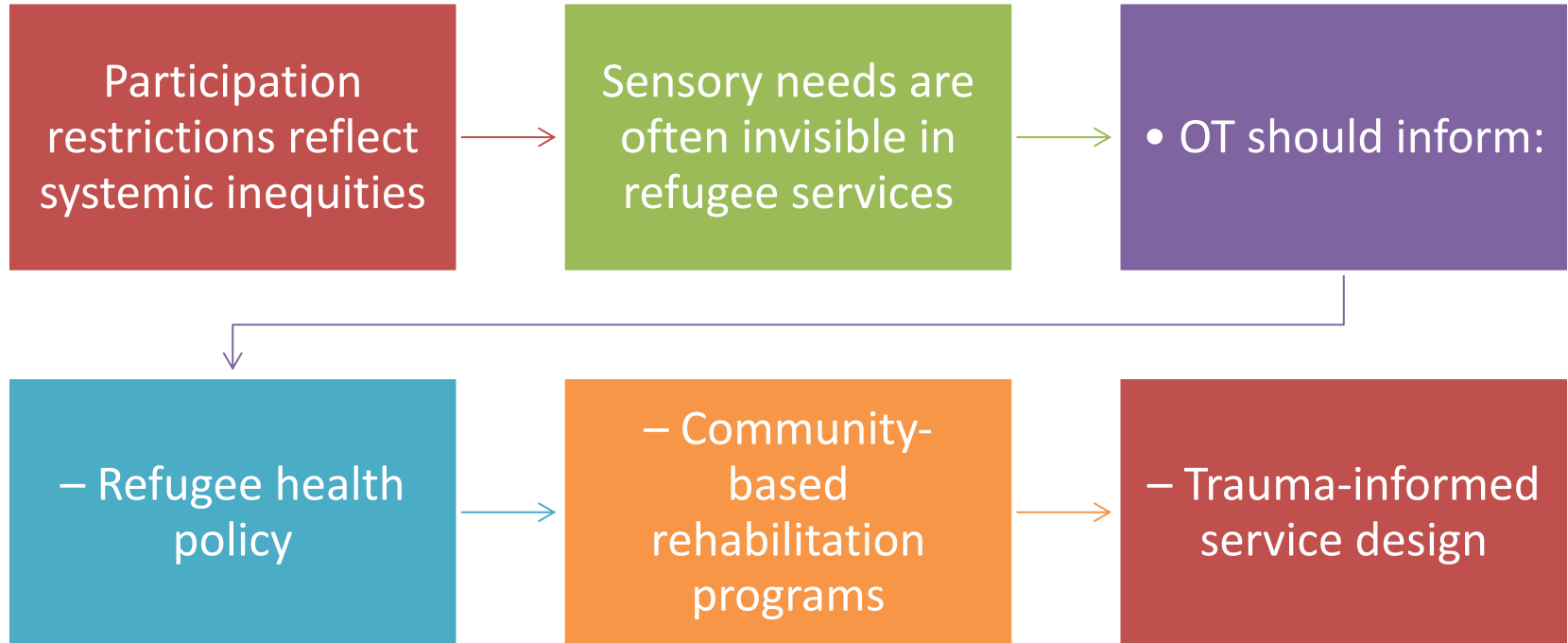
Regression Model

- Trauma exposure and sensory processing explained 54.6% of participation variance.

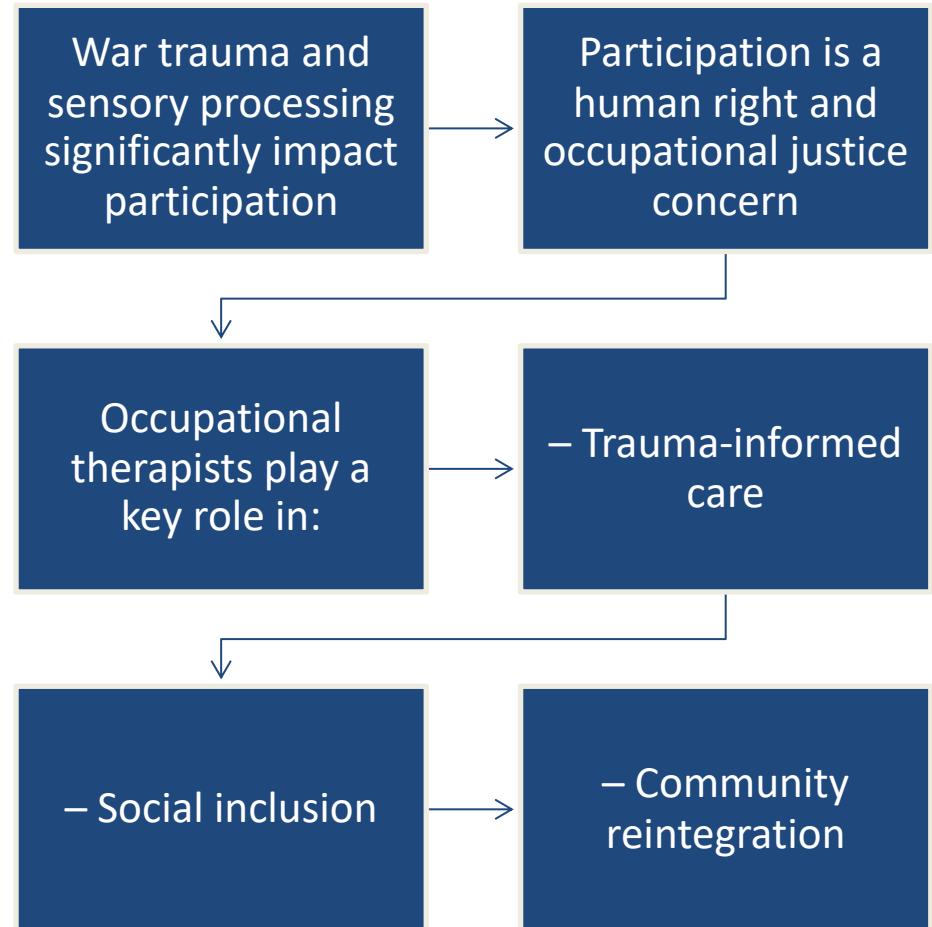
- Model significant: $F(2,51) = 30.675, p < 0.001$

→ Structural and embodied barriers to participation.

Occupational Justice Implications



Discussion & Conclusion



References

Crawford, J., Kapisavanhu, N., Moore, J., Crawford, C., & Lundy, T. (2023). A critical review of social exclusion and inclusion among immigrant and refugee women. *Advances in Public Health*, 2023(1), 8889358.

Odeh, D. I. A. (2024). *The Relationship between Sensory Processing and Participation among Palestinian Preschool Children* (رسالة ماجستير / Doctoral dissertation, AAUP).

Meteran, H., Vindbjerg, E., Uldall, S. W., Glenthøj, B., Carlsson, J., & Oranje, B. (2019). Startle habituation, sensory, and sensorimotor gating in trauma-affected refugees with posttraumatic stress disorder. *Psychological Medicine*, 49(4), 581-589.

Whiteford, G., & Townsend, E. (2011). *Occupational justice*. In C. H. Christiansen & E. A. Townsend (Eds.), *Introduction to occupation: The art and science of living* (2nd ed., pp. 65–84). Upper Saddle River, NJ: Pearson.

Vallejo-Martin, M., Sanchez Sancha, A., & Canto, J. M. (2021). Refugee women with a history of trauma: Gender vulnerability in relation to post-traumatic stress disorder. *International journal of environmental research and public health*, 18(9), 4806.

Robertson, C. L., Halcon, L., Savik, K., Johnson, D., Spring, M., Butcher, J., ... & Jaranson, J. (2006). Somali and Oromo refugee women: Trauma and associated factors. *Journal of advanced nursing*, 56(6), 577-587.

United Nations High Commissioner for Refugees. (2025). *Global trends: Forced displacement in 2025*. UNHCR.



Thank you!

